



SoftChalk™ Sakai Integration Guide

Updated May 24, 2010

Contents

Introduction	3
Types of Packaging Formats	3
Collect Scores from Your Students	3
Publish Method	4
In SoftChalk: Enter the Server Information	4
In SoftChalk: Publish a Lesson.....	6
View a Published Lesson	8
In SoftChalk: Replace a Lesson.....	10
In SoftChalk: Download a Lesson from the Server	11
In SoftChalk: Open a Lesson from the Server to Edit It	13
In Sakai: Rename a Lesson Shortcut	15
In Sakai: Remove a Lesson and a Lesson Shortcut	17
Students Accessing Your Lesson	18
WebDAV Method	19
Set Up the WebDAV Client	19
Copy a SoftChalk Lesson Folder into the Client Folder	20
Create a Link to the SoftChalk Lesson.....	21
In Sakai: Change the Name of the Link.....	22
Sakai Administrator	24
Install lbgateway	24
Troubleshooting.....	24
Test the Installation.....	25
Help	25
Copyright Information	25

Introduction

This guide will cover how to upload your SoftChalk lessons into the Sakai learning management system.

(If you are a Sakai administrator, please see the section [Sakai Administrator](#).)

If you don't have SoftChalk already, you can **download a free trial version** at: http://www.softchalk.com/lb_trial.html. This is a fully functional version. Once you purchase SoftChalk, you can enter your license information and continue working without having to re-install SoftChalk.

Types of Packaging Formats

This guide will cover the steps for publishing and uploading your lesson in a standard zip format. There are two ways to do upload your lesson:

- A shortcut way using the **Publish Lesson** feature within SoftChalk (see the section [Publish Method](#))
- WebDAV way – creating a WebDAV network folder on your computer (see the section [WebDAV Method](#))

Collect Scores from Your Students

SoftChalk supports the formatting of lessons in a SCORM 1.2 format and a SCORM 2004 format. SCORM is a format that allows for collecting scores. If your Sakai learning management system supports one of those SCORM formats, then you may be able to upload your lesson as SCORM and have the grades appear in the SCORM Reports area of your Sakai system. For additional information about whether your Sakai system supports SCORM, we suggest you contact your Sakai system administrator.

IMPORTANT: There are other ways to collect scores from your students other than SCORM.

- SoftChalk has a **ScoreTracker** system that allows the collecting of scores in a format that can be downloaded and opened in a spreadsheet program like Excel. SoftChalk allows you to create a free account in our ScoreTracker system. **The ScoreTracker allows you to download student scores from a lesson or a course.** For details, see the SoftChalk User Guide (within SoftChalk, choose **Help/Help Topics/User Guide**). Search on **ScoreTracker** for details.
- You can have **scores emailed to you**. For details, search in the User Guide on Lesson Reporting.
- Your students can **print certificates**. For details, search in the User Guide on Lesson Reporting.

Publish Method

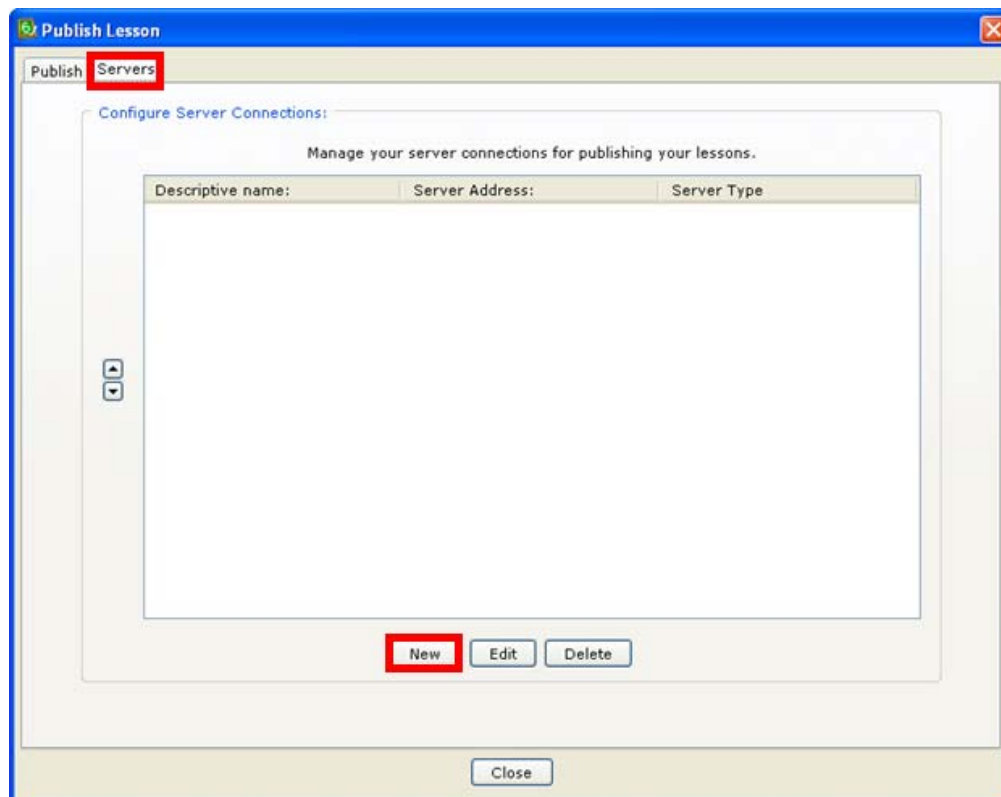
In SoftChalk: Enter the Server Information

IMPORTANT: Your Sakai administrator must configure your Sakai server to support this method of publishing SoftChalk lessons to Sakai.

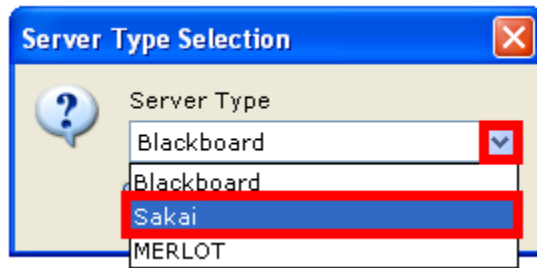
(If you have trouble publishing your SoftChalk lessons to Sakai using the following instructions, please contact your Sakai administrator to make sure your Sakai server has been configured. Tell your Sakai administrator to see the section in this guide [Sakai Administrator](#).)

You only have to enter the server information once for each computer you use.

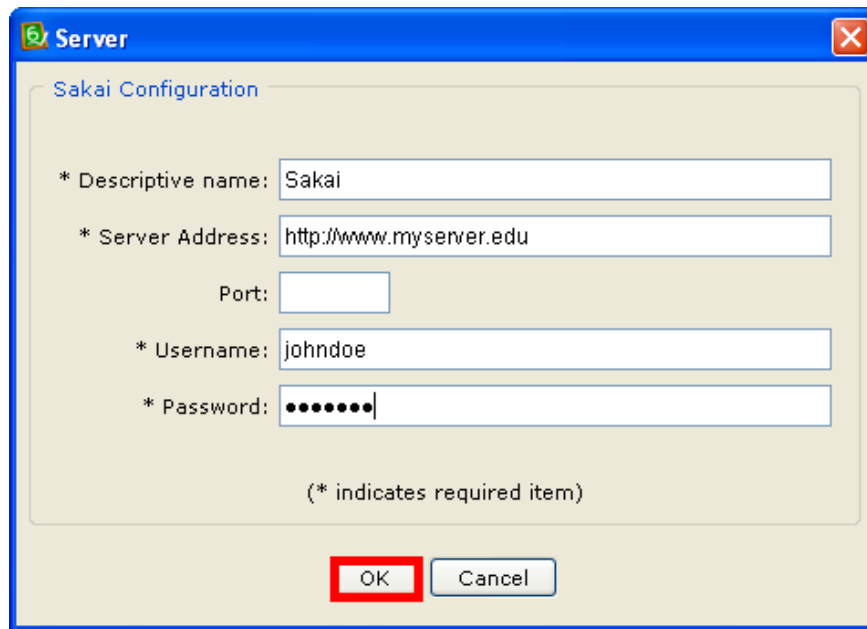
1. Start SoftChalk. Choose **File/Publish Lesson**.
2. If you haven't entered any server information, then the window should open to the **Servers** tab. (If you don't see the **Servers** tab, then click the **Servers** tab at the top of your window.) Click **New** (see below).



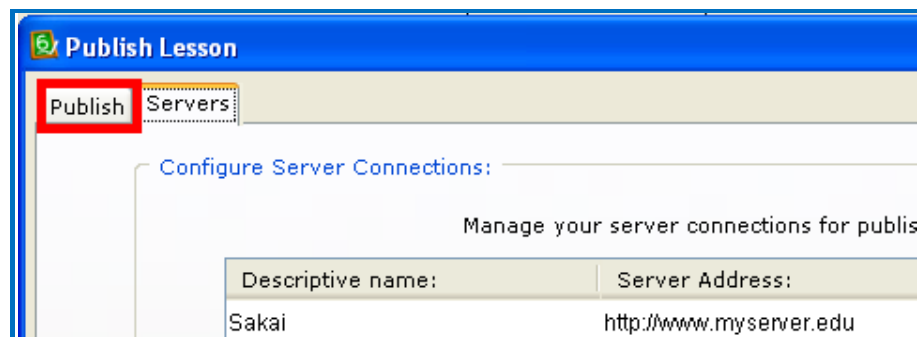
- From the dropdown menu for the server type, select **Sakai** (see below). Click **OK**.



- Enter a **Descriptive name** such as **Sakai**.
- For your Sakai **Server address**, enter the *web address you use to log into your Sakai server* (see below). (The www.myserver.edu shown below is just an example.) Enter your **Username** (**user id** in Sakai) and **Password** for your Sakai account. Click **OK**.

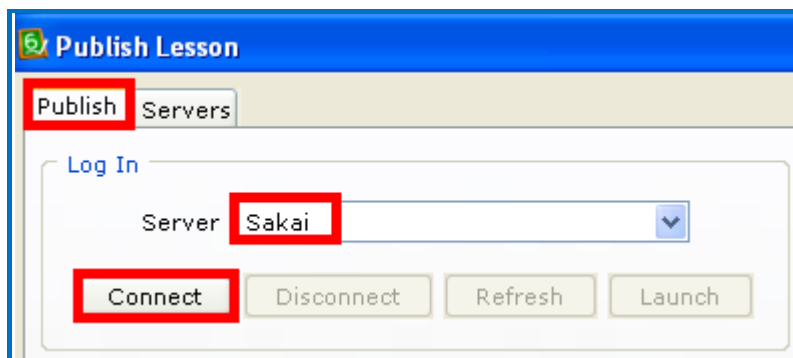


- Click the **Publish** tab to begin the publish process (see below). Follow the steps in the next section for publishing a standard zip file.



In SoftChalk: Publish a Lesson

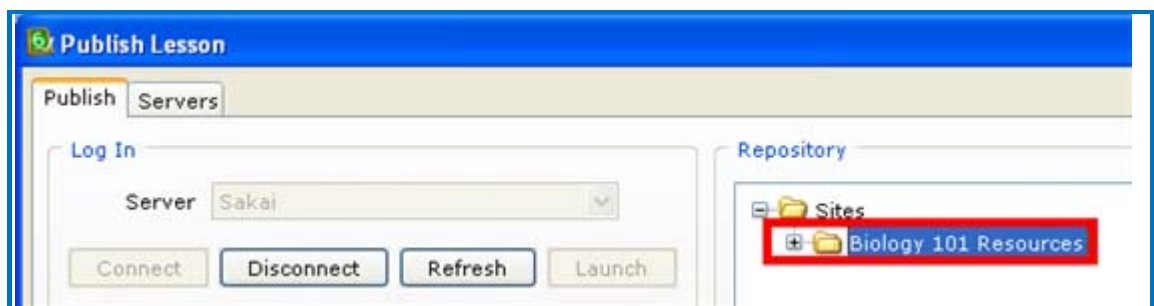
1. Start SoftChalk if it is not already open. Open a lesson you want to publish (**File/Open Recent** or **File/Open**) or start a new lesson (**File/New**) and save this lesson.
2. If your publish window is not already open, choose **File/Publish Lesson**. The **Publish** tab at the top should be selected if you have entered server information. (If you have NOT entered server information, see the previous section [In SoftChalk: Enter the Server Information.](#))
3. If you have more than one server, you may need to select your server from the dropdown menu at the top. Then click **Connect** (see below).



IMPORTANT: If you *cannot connect to your Sakai server*, make sure you are connected to the Internet. (Also double-check your information under the **Server** tab. You may need to enter a Port number.)

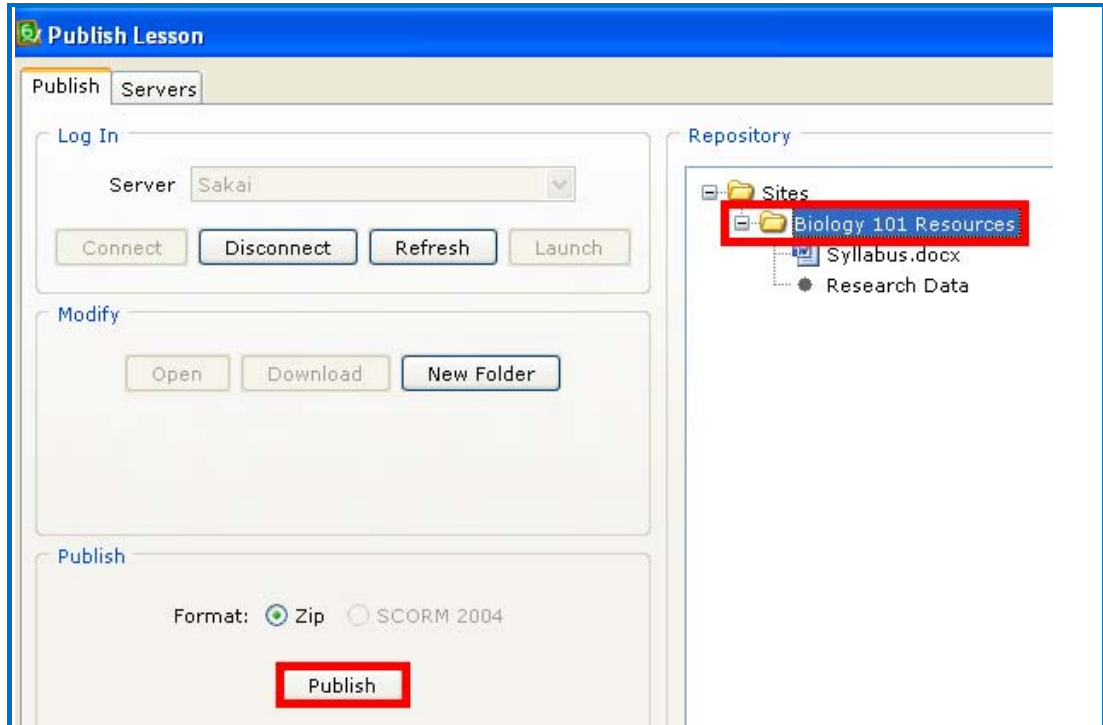
If you are connected to the Internet and still cannot connect, then contact your Sakai administrator to make sure your server is configured for publishing SoftChalk lessons. As mentioned previously, tell your Sakai administrator to see the section in this guide [Sakai Administrator](#).

4. Once you connect to the server, click the + beside your course Resources folder (see below). You can also double-click on the folder icon or the folder name to expand the list.

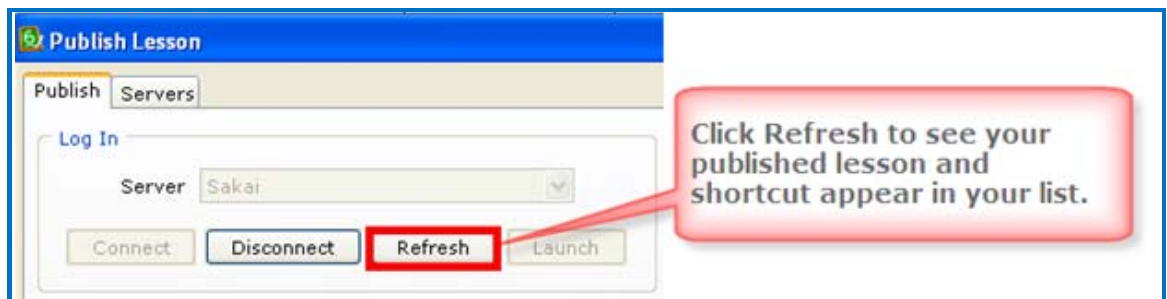


5. Click on your course **Resources** folder to select it. Click **Publish** (see below).

IMPORTANT: Depending on your server connection speed, publishing may take a minute or more.

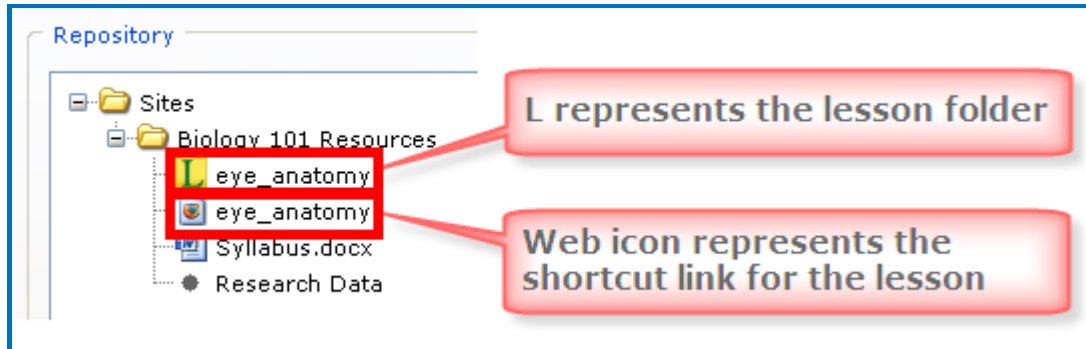


6. Click **OK** at the publish confirmation screen.
7. **IMPORTANT:** You may need to click **Refresh** to see your lesson and shortcut appear in your list (see below).



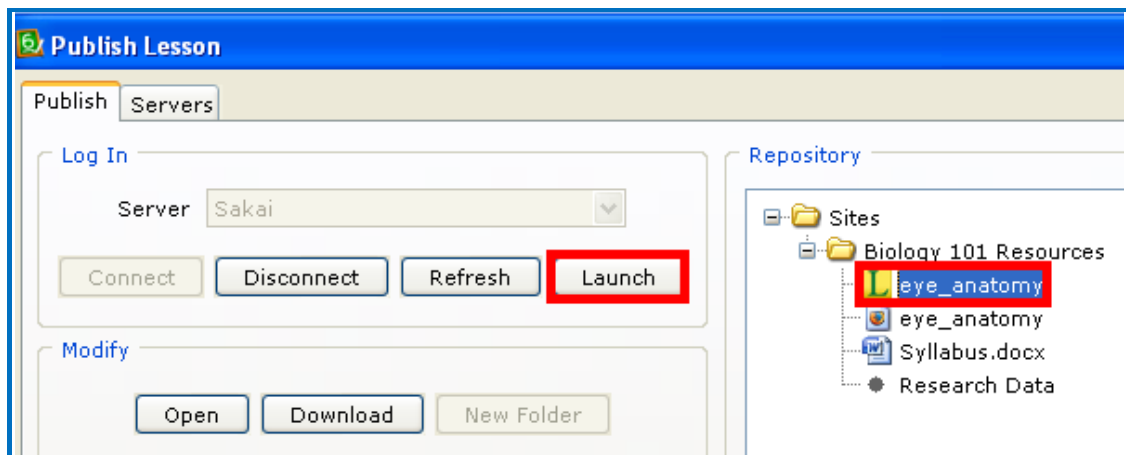
8. Once your lesson is published, you will see an **L icon** representing your lesson folder and a **web icon** representing the shortcut link to your lesson (see below).

The shortcut link has the same name as your lesson. If you'd like, you can change this shortcut name in Sakai (see the section [In Sakai: Rename a Lesson Shortcut](#)).



View a Published Lesson

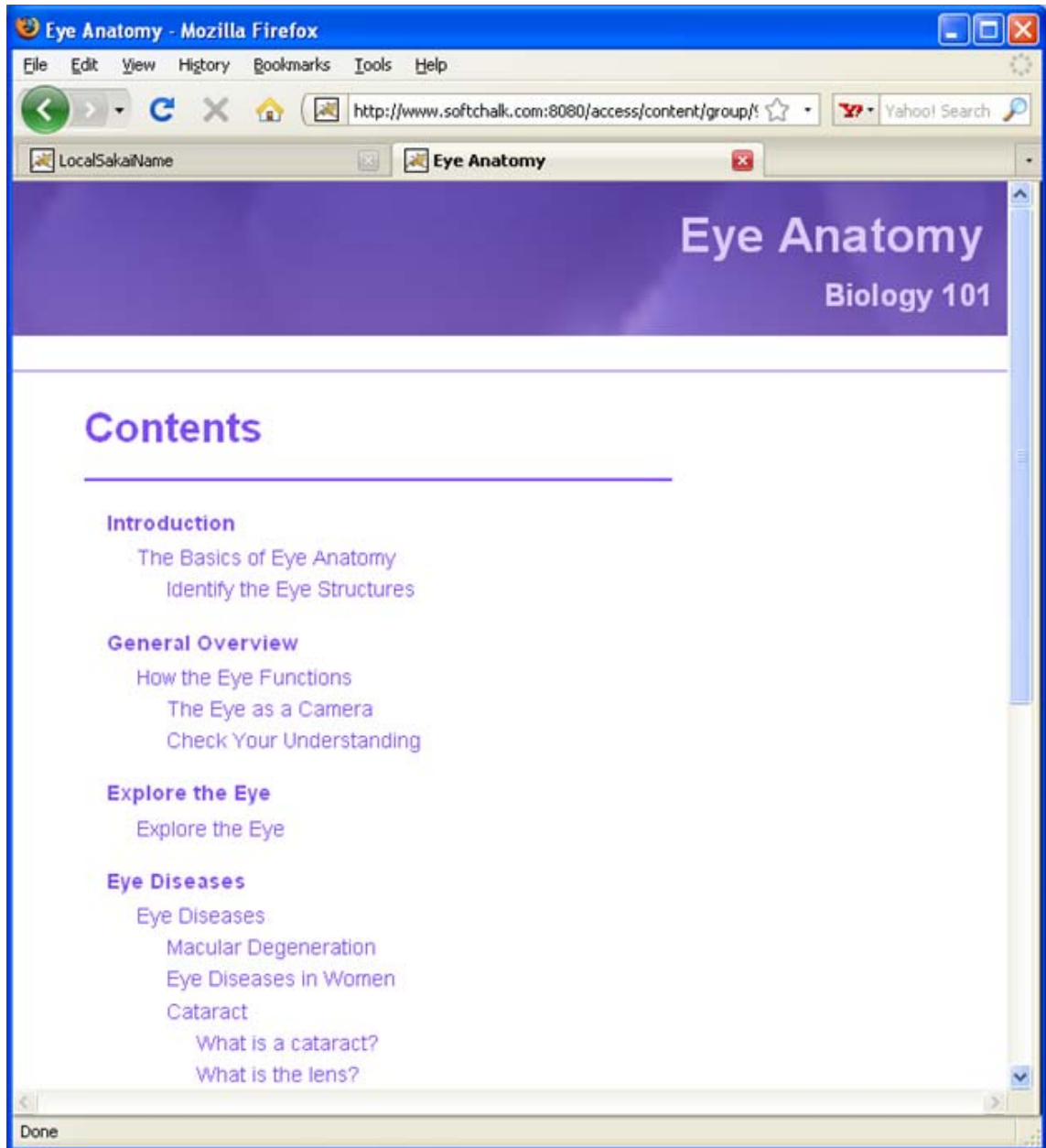
1. To view your lesson as it appears in Sakai, you can click on either the **L icon** (for the lesson folder) or the **web icon** (for the shortcut). Then click **Launch** (see below).



2. Your web browser launches. Enter your **user id** and **password** and click **Login** (see below).

A screenshot of the Sakai login page. The title is 'Login Required'. On the left is the Sakai logo. To the right of the logo are two input fields: 'user id' and 'password'. Below these fields is a 'Login' button.

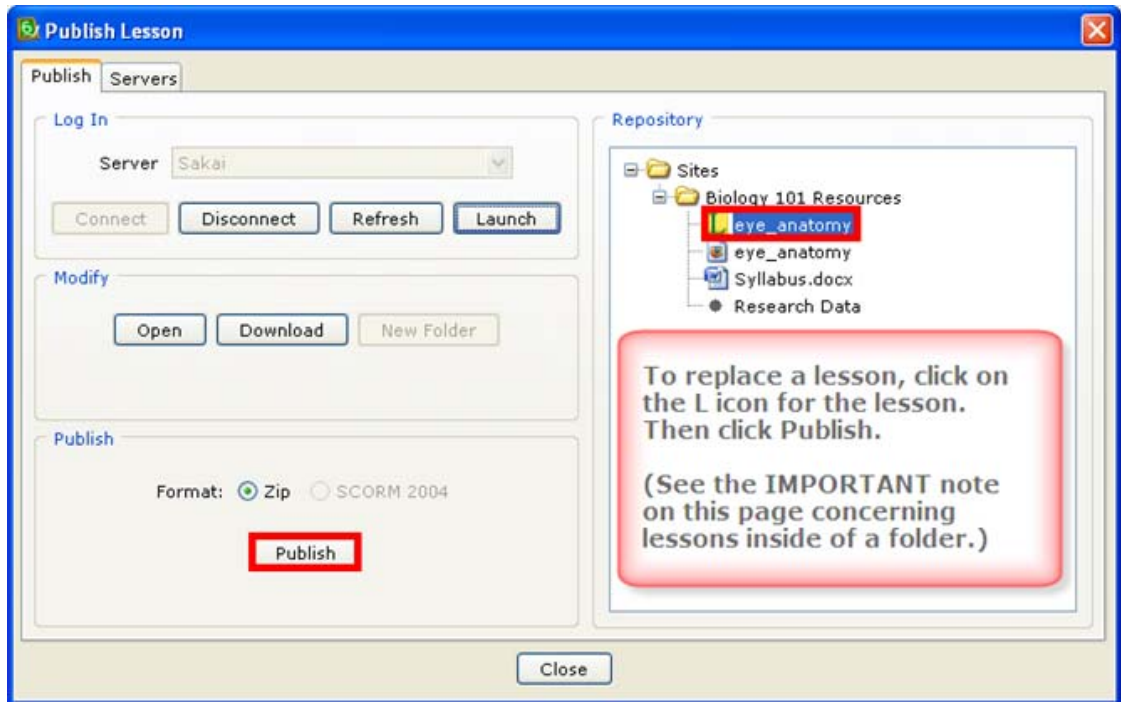
3. Your SoftChalk lesson appears in the browser window as your students would see it (see below).



In SoftChalk: Replace a Lesson

[If you want to remove a lesson (rather than replace a lesson), see the section [In Sakai: Remove a Lesson and Lesson Shortcut.](#)]

1. Start SoftChalk if it is not already open. Open a lesson (Choose **File/Open** or **File/Open Recent.**)
2. If your publish window is not already open, choose **File/Publish Lesson**. The **Publish** tab at the top should be selected if you have entered server information.
3. Select your server from the dropdown menu at the top. Then click **Connect**.
4. On the right-hand side of your screen, select your lesson folder represented by the **L icon**. Click **Publish** (see below).



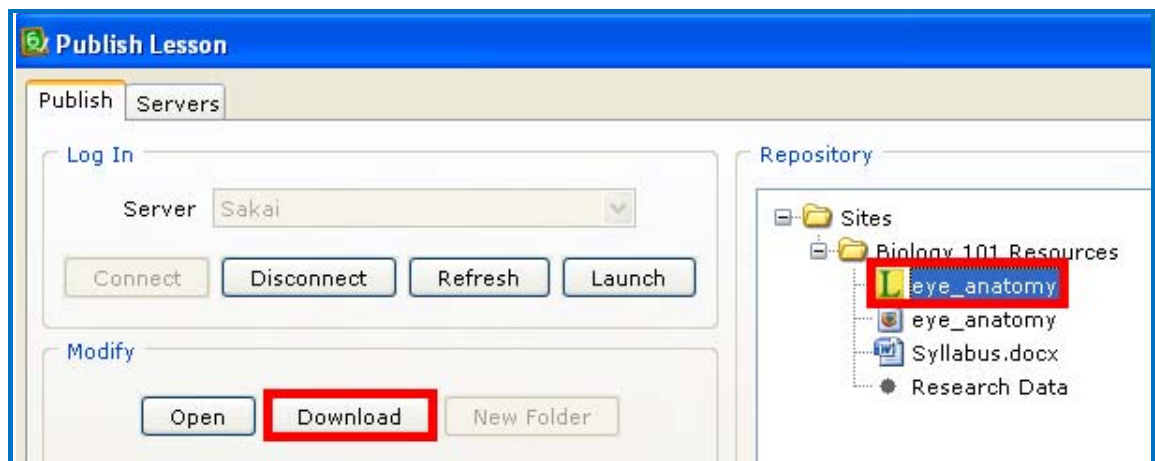
5. Click **OK** at the publish confirmation screen.
6. With your lesson selected, click **Launch** to verify that your lesson was updated.

In SoftChalk: Download a Lesson from the Server

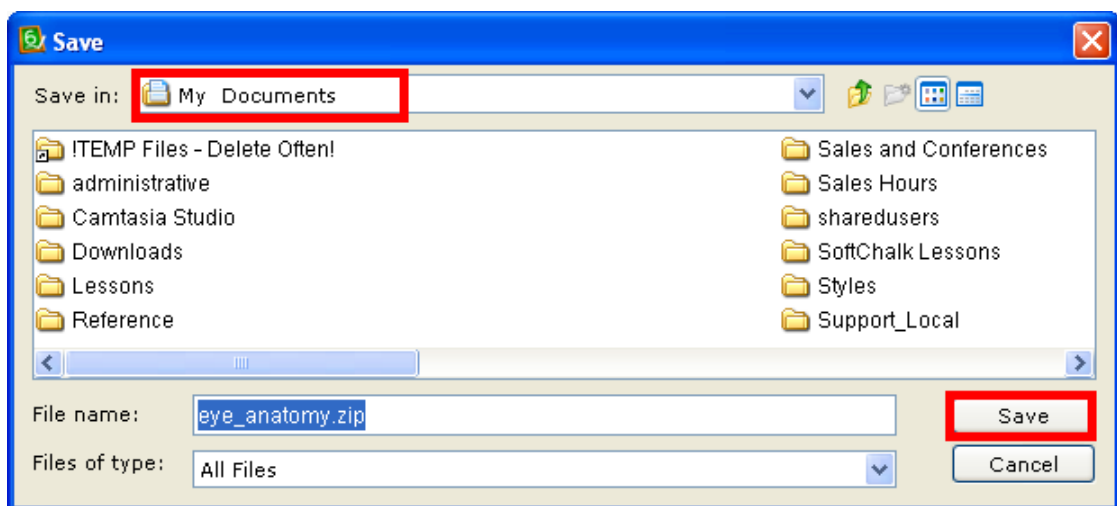
Normally, you will make changes in your lesson on your local computer and then replace the lesson as needed on Sakai. (See the previous section [In SoftChalk: Replace a Lesson.](#))

There may be times, however, when you are at a different computer and you want to download your lesson to that computer. See the steps below for downloading a SoftChalk lesson to your computer.

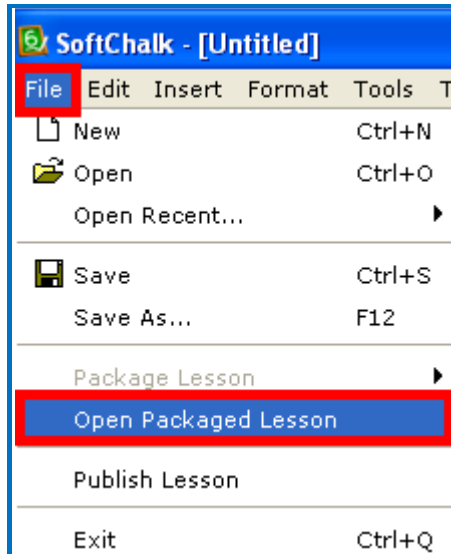
1. Start SoftChalk if it is not already open.
2. Choose **File/Publish Lesson**.
3. Select your server from the dropdown menu at the top. Then click **Connect**.
4. Select your lesson represented by the L icon and click **Download** (see below).



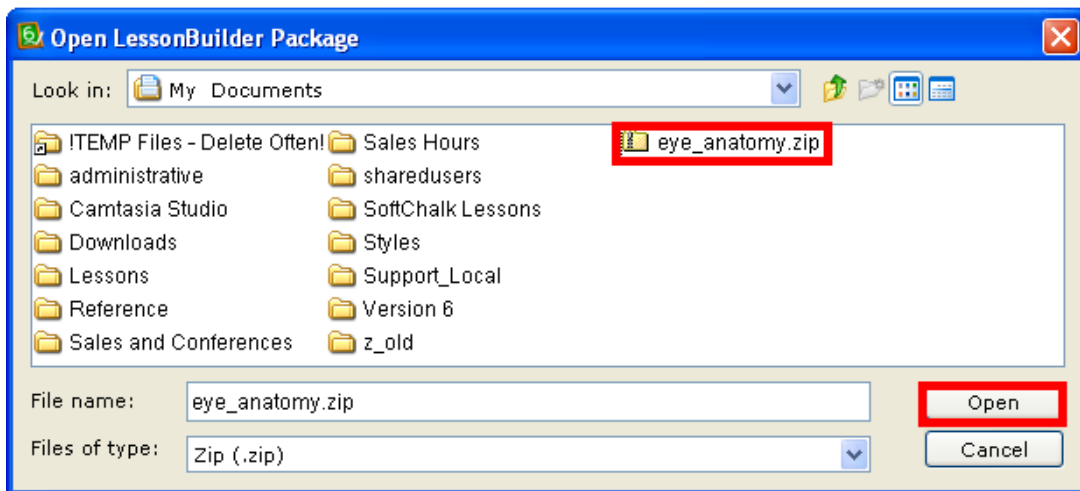
5. Navigate to where you want to save your lesson and click **Save** (see below). Notice that the downloaded file is a .zip file.



6. Click **OK** at the download complete window.
7. Click **Close** to close out of your Publish Lesson window.
8. Choose **File/Open Packaged Lesson** (see below).



9. Navigate to the .zip file you saved earlier. Select it and click **Open** (see below).

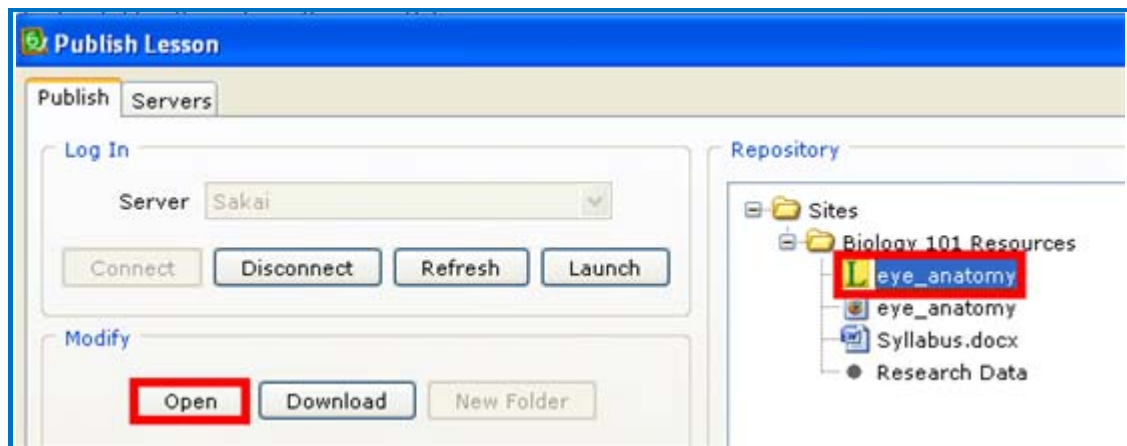


10. Your opened lesson should appear. (When you open a packaged lesson, a lesson folder is automatically created in the same folder as your .zip file on your local computer.)
11. If you want to make changes and publish your lesson to the server again, see the section [In SoftChalk: Replace a Lesson.](#)

In SoftChalk: Open a Lesson from the Server to Edit It

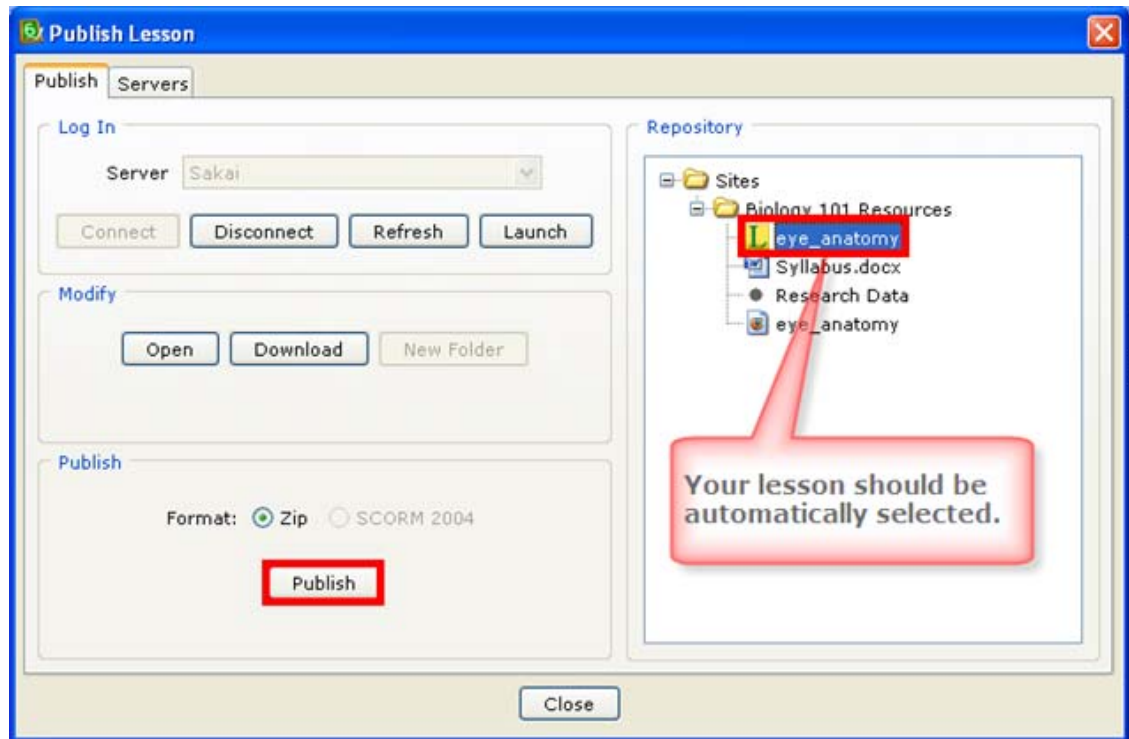
IMPORTANT: Be aware that the steps below allow you to open and edit your lesson on the server. *If you have a local lesson on your computer, the changes below will NOT apply to your local lesson.* (You can download a lesson from the Sakai server to your local computer and edit the lesson. See the section [In SoftChalk: Download a Lesson from the Server.](#))

1. Start SoftChalk if it is not already open.
2. If your publish window is not already open, choose **File/Publish Lesson**. The **Publish** tab at the top should be selected if you have entered server information.
3. Select your server from the dropdown menu at the top. Then click **Connect**.
4. Select your lesson represented by the **L icon** and click **Open** (see below).



5. Make changes to your lesson and save your lesson. **IMPORTANT:** Again, be aware that you are saving changes just to be published back into your server. These changes are NOT saved on your local computer.
6. Choose **File/Publish Lesson**.
7. Select your server from the dropdown menu at the top. Then click **Connect**.

8. Notice that your lesson is automatically selected. Click **Publish** (see below). Your edited changes are now in the lesson on the server. Once again the changes are only in the lesson on the server, NOT in a lesson on your local computer.



9. Click **OK** at the publish confirmation screen.
10. With your lesson selected, click **Launch** to verify that your lesson was updated.

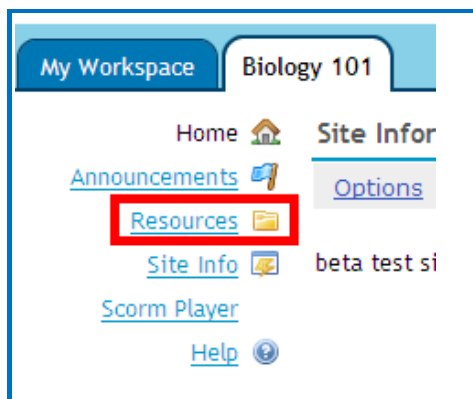
In Sakai: Rename a Lesson Shortcut

You can rename a lesson shortcut within Sakai.

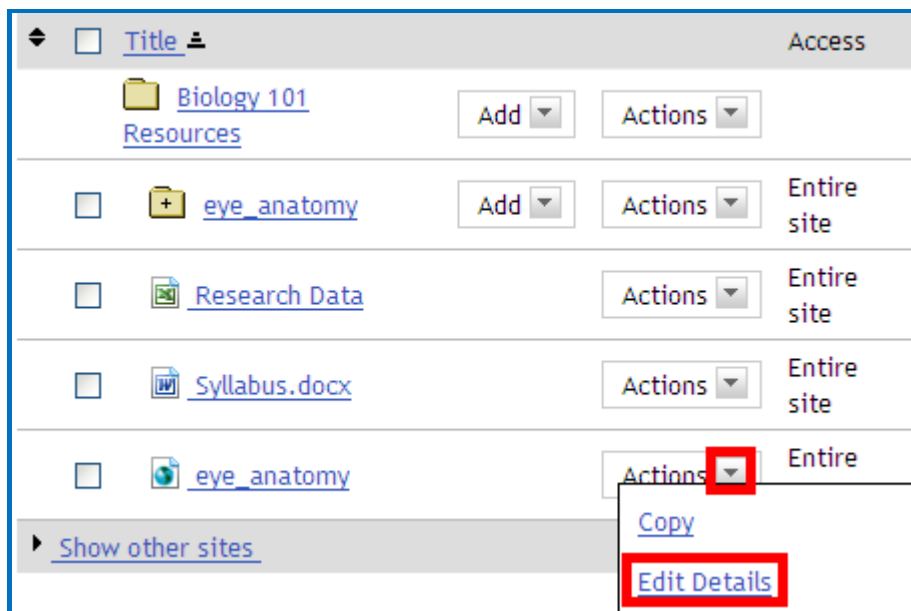
1. Log into your Sakai account.
2. **IMPORTANT:** Click the course tab to select your course (see below).



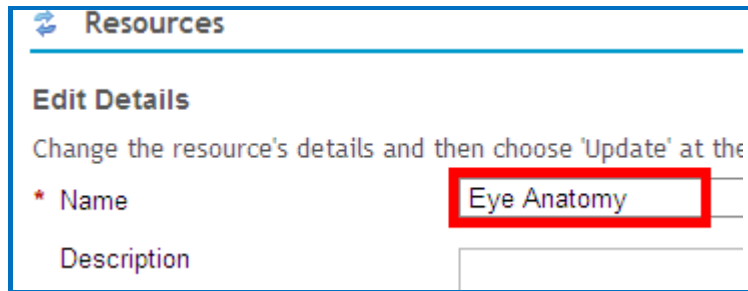
3. At the left, click **Resources** (see below).



4. Click on the **Actions** dropdown menu beside the shortcut link (web icon) and select **Edit Details** (see below).



5. Type in a different name (see below).



Resources

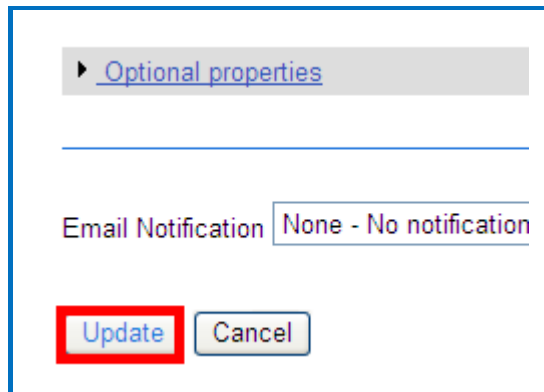
Edit Details

Change the resource's details and then choose 'Update' at the

* Name

Description

6. Scroll down to the bottom of the page and click **Update** (see below).



[Optional properties](#)

Email Notification

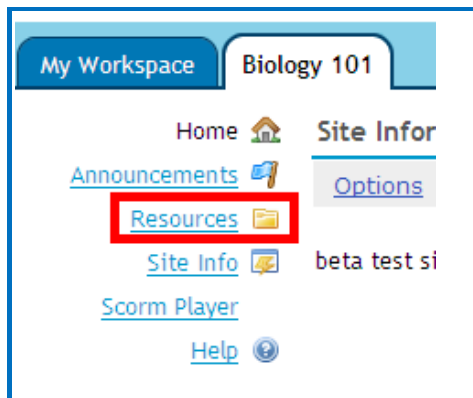
In Sakai: Remove a Lesson and a Lesson Shortcut

You can remove a lesson or lesson shortcut within Sakai. (If you want to replace a lesson rather than remove it, see the section [In SoftChalk: Replace a Lesson.](#))

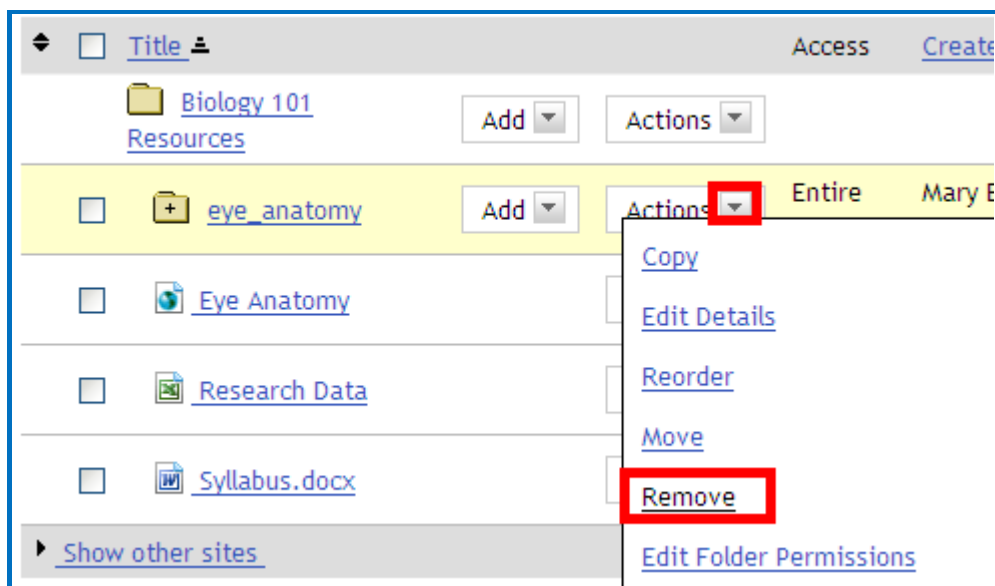
1. Log into your Sakai account.
2. **IMPORTANT:** Click the course tab to select your course (see below).



3. At the left, click **Resources** (see below).



4. Click on the **Actions** dropdown menu beside the item you want to remove and select **Remove** (see below). *Repeat this step to remove the shortcut to your lesson.*



Students Accessing Your Lesson

Your students will need to click on the lesson shortcut you created to launch the lesson.

Students can access the SoftChalk lessons using all the major computers and browsers. (See the supported list below.)

- Windows computers with the XP, Vista and Windows 7 operating systems using Internet Explorer or Firefox
- Macintosh computers using Safari or Firefox

WebDAV Method

Before attempting this method, first contact your Sakai administrator to see if you can use the SoftChalk Publish method (see the section [Publish Method](#)).

(The WebDAV method to upload your lessons does not require any action on the part of your Sakai administrator.)

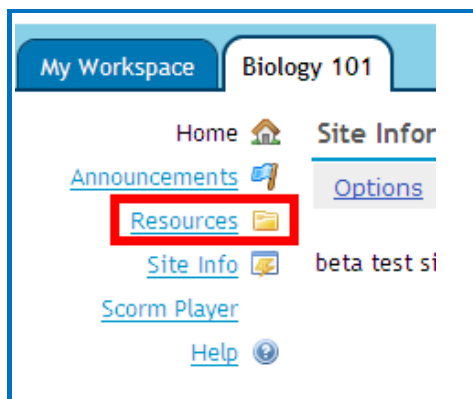
Using the WebDAV method, you will create a network folder (client) on your computer into which you can put your SoftChalk lessons for your students.

Set Up the WebDAV Client

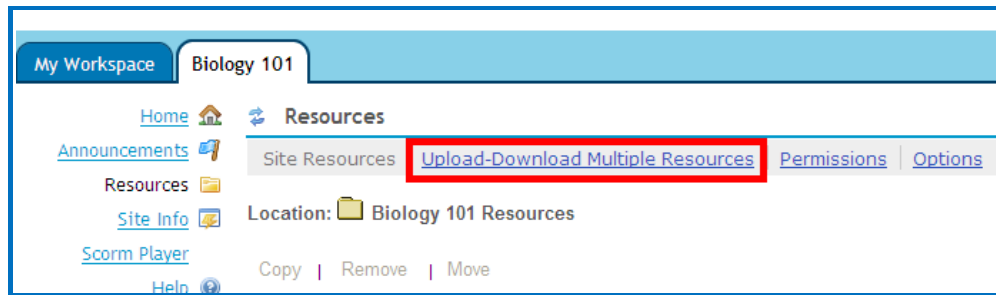
1. Log into your Sakai account.
2. **IMPORTANT:** Click the course tab to select your course (see below).



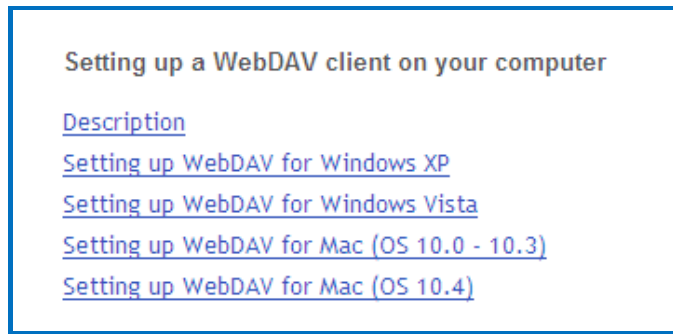
3. At the left, click **Resources** (see below).



4. Click **Upload-Download Multiple Resources** (see below).

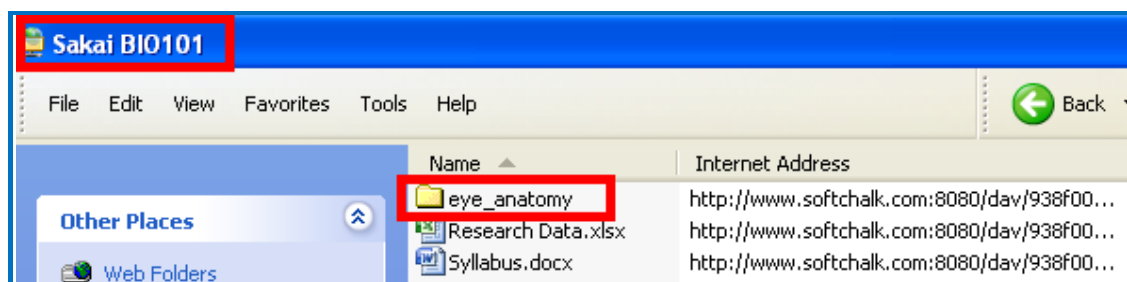


5. Click the appropriate link for instructions on setting up a WebDAV client on your computer (see below). Set up the WebDAV client following the appropriate instructions.



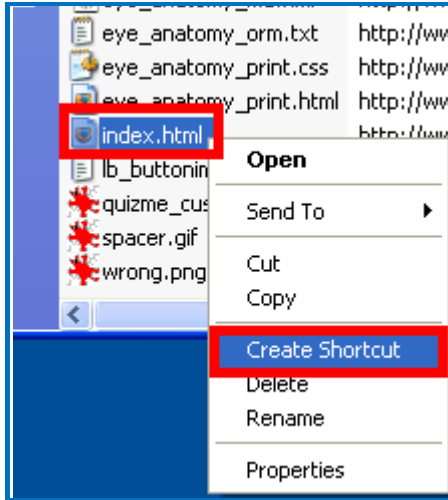
Copy a SoftChalk Lesson Folder into the Client Folder

1. Once you have set up a WebDAV client on your computer, open the client folder you just created. (On Windows XP, you will find this folder under **My Computer/My Network Places**.)
2. You may need to type a username and password.
3. You can copy a SoftChalk lesson folder such as **eye_anatomy** into this folder (see below).

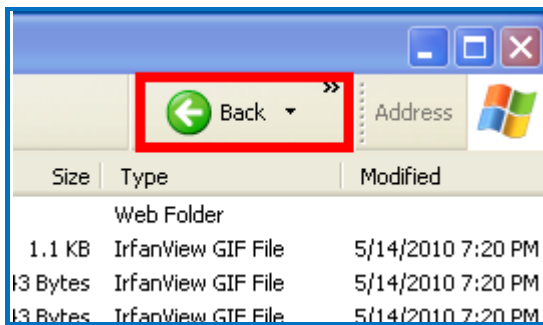


Create a Link to the SoftChalk Lesson

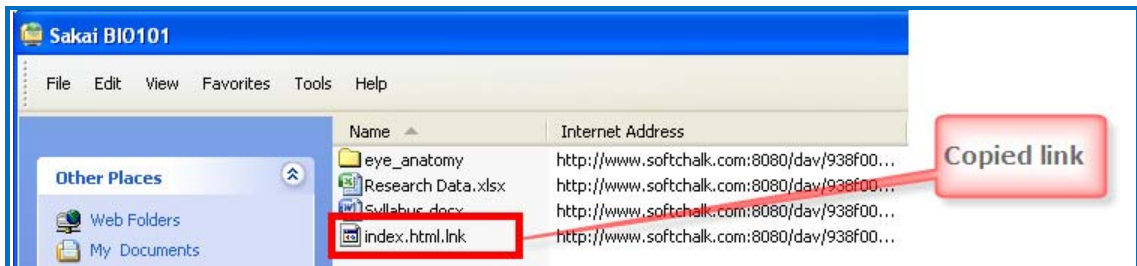
1. You will need to create a link to the *index.html* file within this folder. Open the lesson folder within your WebDAV client folder and right-click on *index.html* and choose **Create Shortcut** (see below).



4. Click **OK** at the message that the shortcut will be placed on your desktop.
5. Go back to the folder where your lesson resides. (Click the **Back** button - see below.)

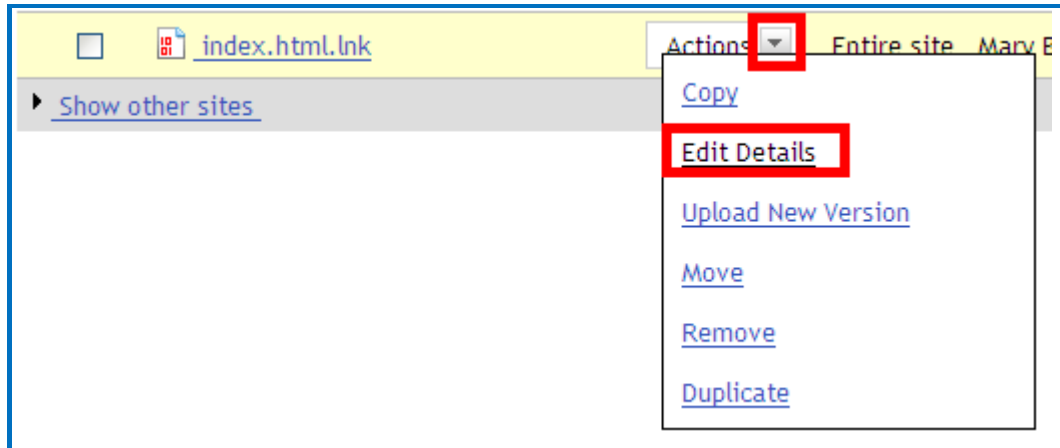


6. Copy the shortcut you just created from your desktop into your client folder (see below). Notice that the name changes to *index.html.lnk*.

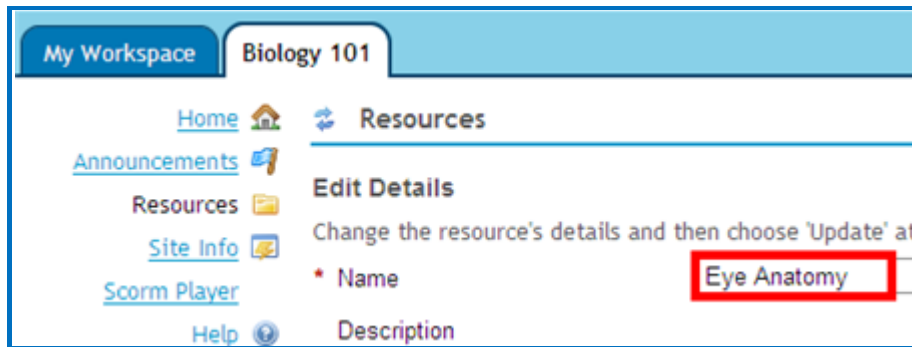


In Sakai: Change the Name of the Link

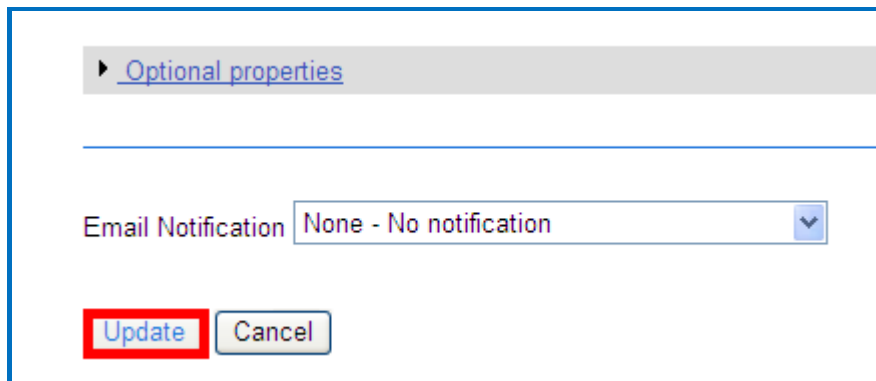
1. Log into your Sakai account to change the name of your link.
2. After logging in, at the top click the course tab to select your course.
3. At the left, click **Resources**.
4. For *index.html.lnk* under **Actions** select **Edit Details** (see below).



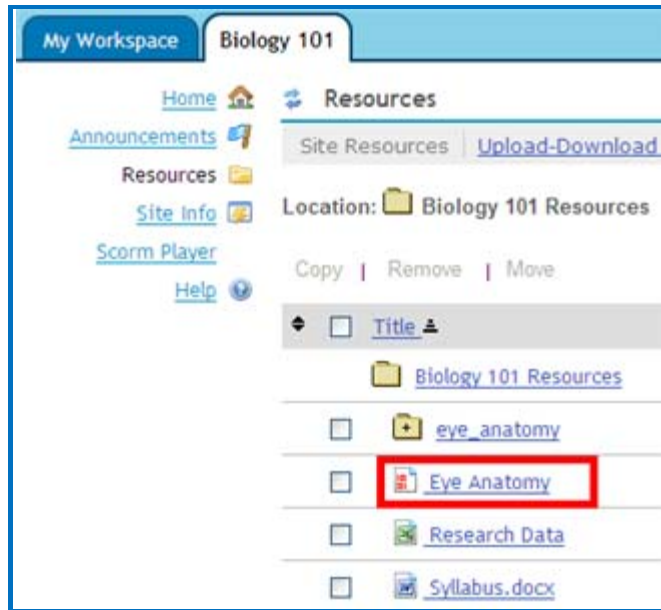
5. Under **Name**, type a different name such as *Eye Anatomy* (see below).



6. Scroll down the window and click **Update** (see below).



7. The updated name (for the link to your lesson) appears in your Resources list (see below).



Sakai Administrator

In order for your faculty to use the SoftChalk Publish feature (see the section [Publish Method](#)), you will need to install an application from SoftChalk called *lbgateway*. Typically this installation takes a few minutes.

IMPORTANT: You must have **Sakai version 2.6.x or later** to install this application.

The *lbgateway* application is a servlet that implements a set of REST operations to support bi-directional access to content in Sakai course sites.

Install *lbgateway*

Use the following script to install *lbgateway* into your Sakai (2.6.x or later) server.

1. In a command shell, CD into your sakai source directory (referred to as sakai/ below).
2. Download *lbgateway* using the following command:
`svn export https://source.sakaiproject.org/contrib/softchalk/tags/lbgateway-15/ softchalk`
3. Run `cd softchalk`
4. Run `mvn clean install sakai:deploy`

The *lbgateway* application is not a registered Sakai tool. It is a servlet that processes REST requests using Sakai kernel and application services. As such, it requires a separate login to maintain proper security. Operation of this application can be tested (once Tomcat is running again) using the following URL in a browser:

<http://your-host.edu/lbgateway/help?>

A description of the supported REST commands is displayed.

Troubleshooting

Maven Failure

Maven may fail during the build process. Make sure you have installed *lbgateway* in the correct place (under your sakai-2.6.x or higher directory). Maven errors may indicate other problems.

Gateway Doesn't Respond

If you get no response from the `lbgateway/help?` request, check the URL to make sure you specified your Sakai server. If that seems correct, check that Tomcat is running.

Test the Installation

To test that all went well with your installation, start SoftChalk and follow the procedures found under the section [Publish Method](#).

If you don't have SoftChalk already, you can **download a free trial version** at: http://www.softchalk.com/lb_trial.html. This is a fully functional version. Once you purchase SoftChalk, you can enter your license information and continue working without having to re-install SoftChalk.

Help

If you have problems, questions or comments, please contact us at help@softchalk.com or visit our website at www.softchalk.com

Copyright Information

Copyright ©2002 2003 2004 2005 2006 2007 2008 2009 2010 SoftChalk LLC
All Rights Reserved.